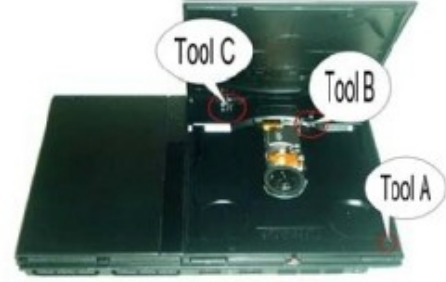


Here you see the 3 parts to the slim tools. They are lettered A, B and C on the picture on the left hand side.



On the photo on the right you can see the Console front view opened. Here you can clearly see where each tool takes its place.



Here you can see the position of where tool **A** takes its place. Now take the Tool **A** and push it in till it goes no further in the square. I advise that the Tool is with a little tape made extra secure that it is fixed so its does not move so it has no chance of being lost. It actually fits perfect with out being stuck down.



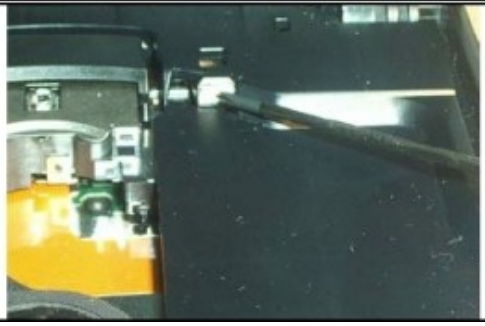
On the picture on the right you can see the Tool **A** when it is parked in place.



On the left you can see the position for Tool **B** in the unchanged form.



Move the disk break with the help of a small pen or screwdriver to the right and hold it in this position. (Look at the photo on the right)

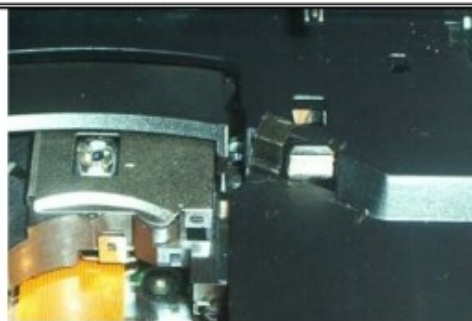




Now it is time to move the Tool **B** exactly as shown in the picture on the left, Push it into the hole left of the disk break. The wooden tweezers were only used for photographic reasons. With the fingers it's easier. Make sure it is placed in the correct position so it can not fall through the hole.



In picture on the right hand side you can see the Tool **B** in its place.



On the left hand side you can see the position for Tool **C**.



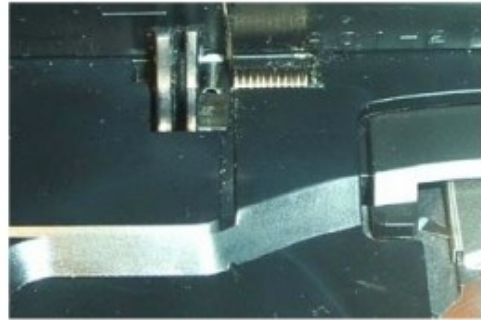
Now move Tool **C** as shown in the picture in the direction of the hinge. Use your finger for this it is very easy.



You need to put Tool **C** in the gap between the metal clip and the hinge. Please look at picture on the left.



Push Tool **C** with help from a small screwdriver till it goes no further downwards. Lay the Tool flat and it is fixed and your console is ready for playing your imports. If it sticks up a little at the back then you need to with a small screwdriver at the front of the tool and raise about 1 -2mm and again push down. When the Tool **C** is laying flat your console is ready for use.



With these tools you can use the Swap Magic Boot discs flawlessly on the PS2 SCPH-7000*. (SLIM LINE)

These tools can be left in the console and don't have to be removed. The console still works playing your original CD/DVD with no problem at all, if you wish to do so.

The cover can be left open or closed when playing your games.